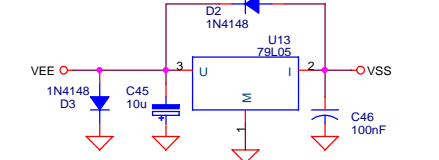
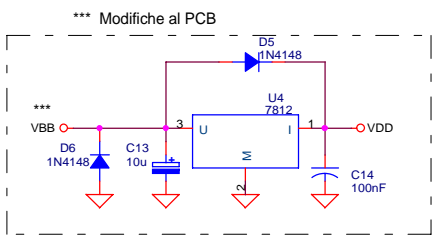


Taratura:
 Dare la massima tensione in ingresso a U3 (10V)
 Regolare R11 per la massima soppressione della nota piu' alta tenedo l'integratore in dinamica
 Tipicamente con 12V di alimentazione la tensione su J4 e' di circa 500mV



*** Modifiche al PCB Dual Freq AOM Diver Rev.2
 Tagliare la pista (lato rame) che collega il PIN3 di U4 al VCC e ripristinare il collegamento tra le piste isolando il PIN3
 Tagliare la pista (lato componenti) che collega il PIN2 di L3 alle alimentazioni di U1, U6 e U9, e collegarla al PIN3 di U4.

TTL MOD IN=L	RF OUT=ON
TTL MOD IN=H	RF OUT=OFF

Title Dual Frequency AOM Modulator		
Size A3	Document Number aom_two_frequency_rev3.dsn	Rev 3.0
Date: Wednesday, February 15, 2012	Sheet 1	of 1

Dual Frequency AOM Modulator Revised: Wednesday, February 15, 2012
 lom_two_frequency_rev3.dsn Revision: 3.0

Bill Of Materials February 15,2012 16:14:04 Page1

Item	Q.ty	Reference	Part	Value	Supplier Ref
1	20	C1, C7, C10, C12, C14, C16, C17, C18, C21, C24, C25, C26, C28, C29, C30, C32, C37, C43, C44, C46	Cond. Cer. 50V SMT 0805	100n	
2	8	C2, C5, C9, C11, C15, C22, C27, C48	Cond. Cer. 50V SMT 0805	1n	
3	3	C3, C23, C31	Cond. Cer. 50V SMT 0805	1u	
4	3	C4, C6, C38	Cond. Tant. 25V SMT 2010	22u	
5	5	C8, C34, C35, C39, C40	Cond. Cer. 50V SMT 0805	100p	
6	4	C13, C33, C36, C45	Cond. Tant. 25V SMT 2010	10u	
7	1	C19	Cond. Cer. 50V SMT 0805	22p	
8	1	C20	Cond. Cer. 50V SMT 0805	3n3	
9	4	D1, D7, D8, D9	Voltage Reference	TL431ILP	
10	4	D2, D3, D5, D6	Diode	1N4148	
11	1	D4	LED Diode	LED	
12	1	F1	RF Filter	SALF-116	Minicircuits
13	1	J1	Conn. 15P. PCB RA	DIN41612_H15	
14	1	J2	Conn. BNC Shield PCB RA	BNC	RS 512-1253
15	5	J3, J4, J6, J7, J8	Conn. BNC PCB RA	BNC	RS 512-1225
16	1	J5	Conn. Vert. PCB P.2.54	CON3	
17	10	L1, L2, L5, L6, L7, L8, L9, L10, L12, L13	Induttanza SMT 1210	JAF	RS 233-5077
18	3	L3, L4, L11	Induttanza	VK200	
19	1	M2	Power Combiner	LRPS-2-1	Minicircuits
20	3	Q1, Q2, Q4	Transistor	BC337	
21	1	Q3	Transistor	BC327	
22	3	R1, R10, R11	Trim. Oriz. 10G.	10K	
23	7	R2, R12, R16, R17, R30, R35, R38	Res. 0.25W 1% SMT	10K	
24	4	R3, R13, R21, R25	Res. 0.25W 1% SMT	100R	
25	2	R4, R14	Res. 0.25W 1% SMT	10R	
26	1	R5	Res. 0.25W 1% SMT	68R	
27	1	R6	Res. 0.25W 1% SMT	12K	
28	1	R7	Res. 0.25W 1% SMT	150K	
29	1	R8	Res. 0.25W 1% SMT	82K	
30	2	R15, R9	Res. 0.25W 1% SMT	1K	

Z:\projects\AOM\AOM_TWO_FREQUENCY\com_two_frequency_rev3.bom

31	1	R18	Res. 0.25W 1% SMT	1K2	
32	3	R19,R28,R29	Res. 0.25W 1% SMT	22K	
33	1	R20	Res. 0.25W 1% SMT	220K	
34	1	R22	Res. 0.25W 1% SMT	18K	
35	2	R23,R24	Res. 0.25W 1% SMT	390R	
36	3	R26,R27,R36	Res. 0.25W 1% SMT	470R	
37	1	R31	Res. 0.25W 1% SMT	20R	
38	1	R32	Res. 0.25W 1% SMT	0R	
39	2	R34,R33	Res. 0.25W 1% SMT	OPEN	
40	1	R37	Res. 0.25W 1% SMT	47R	
41	2	U1,U6	VCO	ROS-150	Minicircuits
42	1	U2	Directional Coupler	LRDC-10-1J	Minicircuits
43	3	U3,U7,U8	Circuito Integrato	LF412	
44	1	U4	Voltage Regulator	7812	
45	1	U5	Circuito integrato	AD8361	
46	1	U9	RF Amplifier	MAR-4SM+	Minicircuits
47	1	U10	RF Switch	SWMA-2-50DR+	Minicircuits
48	2	U11,U12	RF Attenuator	RVA-2500+	Minicircuits
49	1	U13	Voltage Regulator	79L05	